

# Promising Practices Made Easy: The 21<sup>st</sup> CCLC Web Tool

presented to:  
2015 Illinois 21<sup>st</sup> CCLC Spring Conference

Wednesday, May 13  
Bloomington–Normal Marriott  
Hotel & Conference Center  
Normal, IL 60453

**Harvey Smith**  
**Director, Illinois Interactive Report Card**  
Northern Illinois University

## Promising Practices Benchmarking Tool

- A web tool that...
  - Allows you to access the catalog of information about 21<sup>st</sup> CCLC grants in Illinois
  - Compares your grant with other programs using comparison yardsticks that you select
  - Features information that you and other grantees have submitted as part of evaluation process - presented anonymously
  - Is convenient, quick, easy to use (no, really!)
  - Provides student data portal for PPICS reporting

# Promising Practices Benchmarking Tool

- Two ways to access the web tool
  - Go to <http://www.il21cclc.niu.edu>
  - Or from IIRC at <http://iirc.niu.edu>, click on the link to the web site right on the homepage, under “Resources”



# Logging into the Benchmarking Tool



## 21 CCLC Illinois Benchmarking Tool Login

Login

Username:

Password:

Insert your 21<sup>st</sup> CCLC username and password here, then click “submit”. Don’t remember username or password? Contact Valerie at 815-753-0978 or vlorusso@niu.edu

# Benchmarking Tool Homepage - Access to All Features

The screenshot shows the homepage of the 21st Century Community Learning Centers Illinois Benchmarking Tool. The header includes the title and a logo with the text "Soaring Beyond Expectations". The navigation menu has tabs for Home, I-General Information, II-About Students, III-About Programming, IV-Evaluation and Outcomes, and Reports. A left sidebar titled "Select Search Criteria" contains three sections: "Program Characteristics" (Type of Organization, Location of Program, When in Session), "Students and Programming" (Grade Level of Program, Student Characteristics, Programming), and "Attendance Characteristics" (Average Number of Students per Day, Percent of Students Attending over 30 days, Family Members (other than Student) Served). The main content area has a heading "21st CCLC Illinois Benchmarking Tool" and a list of instructions. A "Student Data Portal" link is also visible. Three yellow callout boxes with red arrows provide additional instructions: "1. Select Search criteria" points to the sidebar; "2. Then select from Performance Indicators to compare programs" points to the "IV-Evaluation and Outcomes" tab; and "Here is link where programs can report student data to assess individual student performance" points to the "Student Data Portal" link.

21<sup>st</sup> Century Community Learning Centers  
**Illinois Benchmarking Tool**

Soaring Beyond Expectations

<< Select Search Criteria Home I-General Information II-About Students III-About Programming IV-Evaluation and Outcomes Reports

21<sup>st</sup> CCLC Illinois Benchmarking Tool

- Step One: Please select the search criteria from the left menu.

... performance indicator tabs to view the data about the matching p

... program data without selecting the search criteria by using the above performance indicator tabs.

Student Data Portal

- To report your student data information, click here: [21<sup>st</sup> CCLC Student Data Portal](#)

1. Select Search criteria

2. Then select from Performance Indicators to compare programs

Here is link where programs can report student data to assess individual student performance

# Step 1 - Selecting Search Criteria



<< Select Search Criteria

Home I-General Information II-About Students III-About Programming IV-Evaluation and Outcomes Reports LogOut

## Program Characteristics

Type of Organization

- All
  - Individual School
  - School District
  - Regional Office of Education
  - College or University
  - Community-based Organization
  - Faith-based Organization
- Location of Program
- When in Session

## Students and Programming

Grade Level of Program

Student Characteristics

- All
  - African American
  - Hispanic
  - Low Income
  - Special Education
- Programming

## Attendance Characteristics

Average Number of Students per Day

Percent of Students

Attending over 30 days

Family Members (Other)

## 21st CCLC Illinois Benchmarking Tool

- Step One: Please select the search criteria.
  - Step Two: Then use the above performance indicator tabs to view data about the matching programs.
- OR
- You can view your individual program data by clicking on the criteria by using the above performance indicator tabs.

[65 Matching grants found.](#)

[Student Data Portal](#)

- To report your student data information, click here: [21st CCLC Student Data Portal](#)

Select as many or as few criteria as you would like - clicking on the links opens the search options

# Step 2 - Performance Indicators



Step 2 - Performance Indicators: select any "General Information" item in headers

Home | I-General Information | I-About Students | III-About Programming | IV-Evaluation and Outcomes  
Leadership Structure | Staffing In General | % Certified Staff | Student:Teacher Ratio | Hours Of Operation

## Performance Indicators

### I - General Information - Leadership Structure

#### Your Individual Grant Data:

**Elementary School:** One lead Teacher (Full time), two youth counselors (part time) that do direct service Monday thru Friday for 3 hours a day.

**Middle School:** District's director over curriculum manages program as part of duties.

**High School:** Program Manager Full time, Program Coordinator Part time, Site Coordinator Part time, Teachers Part time, Teachers Assistants Part time, Resource Workers Contractual

#### Data from Matching Grants of the Search Criteria:

Search Criteria not selected. Please select the search criteria from the left menu to view the data about the matching programs.

# Step 2 - Performance Indicators

21<sup>st</sup> Century Community Learning Centers  
**Illinois Benchmarking Tool**

Home | I-General Information | **II-About Students** | III-About Programming | IV-Evaluation and Outcomes | Reports | LogOut

Total Number | Demographic Data | Selection Process | Retention Strategies | Parent Programming

Performance Indicators  
 II - About Students - Total Number  
 Sample Grant

**Step 2 - Performance Indicators - “About Students” options**

**Your Individual Grant Data 2011:**

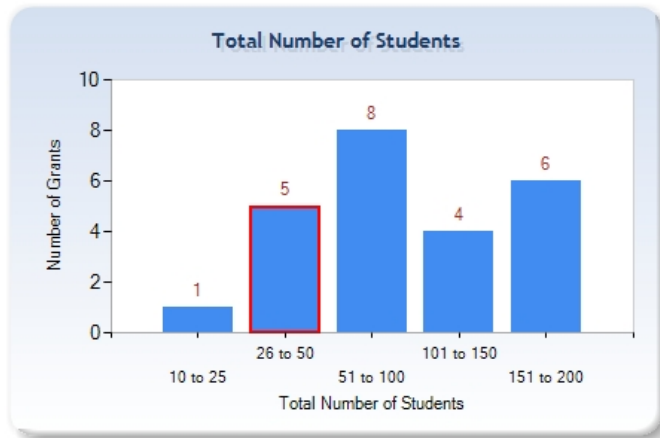
Elementary School: 26 to 50

Middle School: 51 to 100

High School: 51 to 100

**2011 Data from 33 Matching Grants of the Search Criteria:**

**Elementary School**



Total Number of Students	Number of Grants
Data not reported	1
10 to 25	1
26 to 50	5
51 to 100	8
101 to 150	4
151 to 200	6
<b>Total Elementary School Grants</b>	<b>25</b>



# Step 2 - Performance Indicators

**21<sup>st</sup> Century Community Learning Centers  
Illinois Benchmarking Tool**

Home | I-General Information | II-About Students | III-About Programming | IV-Evaluation and Outcomes | Reports | LogOut

Types of Academics | Time on Homework | Arts Programming | Use of Technology | Incentives Used | Youth Development

**Performance Indicators**  
III - About Programming - Types of Academics  
Sample Grant

**Step 2 - Performance Indicators - "About Programming" options**

**Your Individual Grant Data 2011:**

**Reading:** After school staff include the teachers of the core content areas. Each activity is planned and structured to meet the Illinois Learning Standards. A form has been created to critique each activity and align it to the standards

**Math:** After school staff include the teachers of the core content areas. Each activity is planned and structured to meet the illinois learning standards. A form has been created to critique each activity and align it to the standards

**Other Academics:** After school staff include the teachers of the core content areas. Each activity is planned and structured to meet the illinois learning standards. A form has been created to critique each activity, align it to the standards

**Enrichment and recreational activities:** Enrichment and recreation components of the program include creative writing club, international culture club, Work Out with Math, Adventure Camp, and Boys & Girls skill camp.

**2011 Data from 33 Matching Grants of the Search Criteria:**

Reading
Our Reading Program is based on scientifically based strategies and skills in the program that the school uses during the regular day. Teachers incorporate these strategies into their thematic units, and align them with the Reading Standards
Use Ed Performance and College/Career Readiness that work on guided reading, journaling and create environment of learning. Use Book Clubs, Journaling, special events related to script writing to enhance team building, comprehension and content.
State goals 2.B.1a., 2.B.1c. Fox Valley Park District provides Story Book Art program. Worksheets such as After School Achievers. 1-on-1 reading with Accelerated Reader through Friend's of Aurora. Monthly report of activities and alignment to Standards.
Balanced literacy block including opportunities for shared, independent, guided, and choral reading. Students are leveled and matched to material. Standards are consulted when planning activities.
Homework help and academic support curriculum based on daytime curriculum and the following: Jr Great Books, Great Science for Girls, Foundations in Math and Literature, STAMS, CARS, STARS, Princeton Review Prep for ITBS in math and reading Homework help and academic support curriculum based on daytime curriculum and the following: Jr Great Books, Great Science for Girls, Foundations in Math and Literature, STAMS, CARS, STARS, Princeton Review Prep for ITBS in math and
Self-directed reading, homework reading incorporated into tutoring. Skills addressed in discussion: listening, vocabulary, application and connection of information. Student/parent book club

# Step 2 - Performance Indicators

21<sup>st</sup> Century Community Learning Centers  
**Illinois Benchmarking Tool**

Home | I-General Information | II-About Students | III-About Programming | **IV-Evaluation and Outcomes** | Reports | LogOut

Type of Evaluation | Data Sources Used | Reading Grades | Math Grades | State Assessment Data | Sustainability of Program

Performance Indicators  
 IV - Evaluation and Outcomes - Sustainability of Program  
 Sample Grant

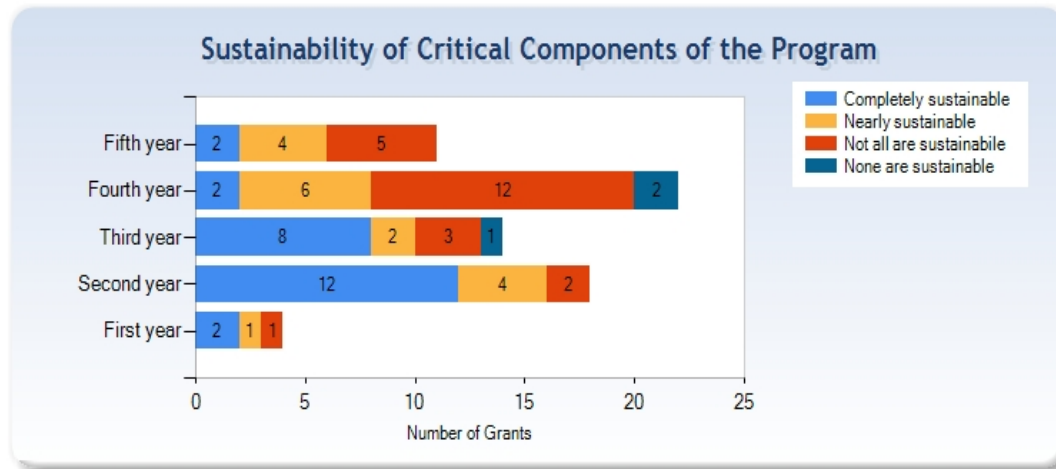
Performance indicators:  
 Select from “Evaluation  
 and Outcomes” options

## Your Individual Grant Data 2011:

Data Not Available

## 2011 Data from 64 Matching Grants of the Search Criteria:

### Elementary School



# Information Results



## 21<sup>st</sup> Century Community Learning Centers Illinois Benchmarking Tool



Then designate Performance Indicators for the selected grants - in this example, the user has designated Leadership Structure

Home | I-General Information | II-About Students | III-About Programming | IV-Evaluation and Outcomes | Reports

Leadership Structure | Starting In General | % Certified Staff | Teacher:StudentRatio | Hours Of Operation | Participation | Sites

Look! Here is the Performance Indicator information (Leadership Structure) for the user's grant

Performance Indicators

I - General Information - Leadership Structure

Your Individual Grant Data:

Elementary School: One lead Teacher (Full time), two youth counselors (part time) that do direct service Monday thru Friday for 3 hours a day.

Middle School: District's director over curriculum manages program as part of duties.

High School: Program Manager Full time, Program Coordinator Part time, Site Coordinator Part time, Teachers Part time , Teachers Assistants Part time, R

And here is the Leadership Structure information for all the grants meeting the Selection Criteria

Data from 65 Matching Grants of the Search Criteria:

Elementary School

All are Part Time: Program Director, Curriculum Coordinator, Site Director, 3 Certified Teachers, 3 Teacher Assistants, 5 community corp members.

"Building coordinator for family programs and 21st CCLC - part time Teachers"

"Building principal oversees the program . Site Coordinator (full-time), Lead teacher, and four teachers (part time), 5-6 PT park staff, PT choir director, part time 8-10 volunteers"

One lead Teacher (Full time), two youth counselors (part time) that do direct service Monday thru Friday for 3 hours a day.

"Program Director ? part-time. Community Partner/Site Coordinator-part-time. School Liaison ? part-time. Support Staff and university staff-part-time."

Two FT employees who divide their time as Program Directors and Instructors in the program. Our program also has 2 part-time teachers, 2 part-time academic instructors, 2 part-time teaching assistants, 1 intern, and 3 volunteers. Also a PT Curriculum Coor

# Information Results



Learning Centers  
ing Tool



Home I-General Information About Students and Outcomes Reports LogOut  
Total Number Demographic Data Selective Programming

Another example - where Number of Students is Performance Indicator

Performance Indicators

II - About Students - Total Number

Your Individual Grant Data:

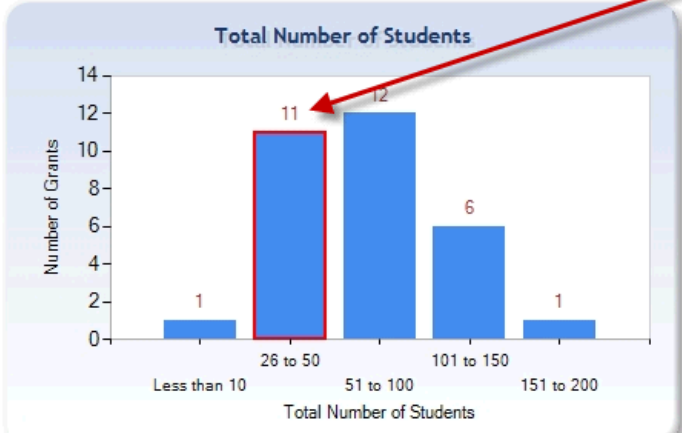
Elementary School: 26 to 50  
Middle School: 51 to 100  
High School: 51 to 100

Number of students for your grant

Number of students for other grants - note the results are presented both graphically and in a data table - on the bar graph, your grant is indicated by red-lined bar on graph

Data from 65 Matching Grants of the Search Criteria:

Elementary School



Total Number of Students	Number of Grants
Data not reported	6
Less than 10	1
26 to 50	11
51 to 100	12
101 to 150	6
151 to 200	1
Total Elementary School Grants	37

# Information Results



Performance Indicators

II - About Students - Demographic Data

Another example - Demographic data

Your Individual Grant Data:

Elementary School: Black/African American

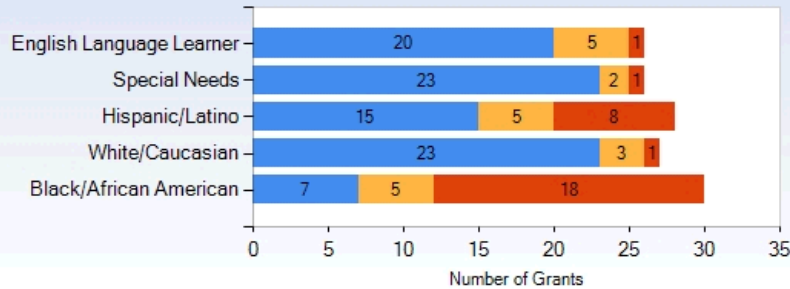
Middle School: White/Caucasian

High School: Black/African American

Data from 65 Matching Grants of the Search Criteria:

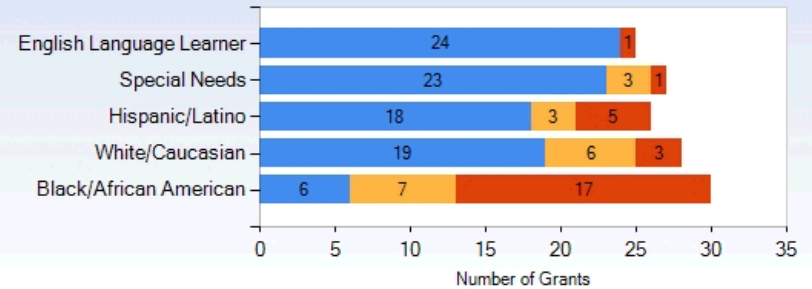
### Elementary School

Less than 25% 25% - 50% More than 50%



### Middle School

Less than 25% 25% - 50% More than 50%



# Custom Reports Feature - Evaluation Feedback



Custom Report -  
Select information  
options, then print an  
instant PDF report

## Performance Indicators

### Custom Reports

Generate custom reports by selecting from the performance indicators below. You can view, save or print the PDF report by clicking the Generate PDF button below.

#### Search Criteria

Include Search Criteria Filters in the PDF

#### I - General Information

Select [All](#) | [None](#)

- Leadership Structure
- Staffing In General
- % Certified Staff
- Teacher:StudentRatio
- Hours Of Operation
- Partner Participation
- Number Of Sites

#### II - About Students

Select [All](#) | [None](#)

- Total Number
- Demographic Data
- Selection Process
- Retention Strategies
- Parent Programming

#### III - About Programming

Select [All](#) | [None](#)

- Types of Academics
- Enrichment/Recreational
- Time on Homework
- Art Programming
- Use of Technology
- Incentives Used
- Youth Development

#### IV - Evaluation and Outcomes

Select [All](#) | [None](#)

- Type of Evaluation
- Data Sources Used
- Reading Grades
- Math Grades
- State Assessment Data
- Sustainability Data

Generate PDF

# Student Data Portal



## 21<sup>st</sup> Century Community Learning Centers Illinois Benchmarking Tool



<< Select Search Criteria

▼ Program Characteristics

- Type of Organization
- Location of Program
- When in Session

▼ Students and Programming

- Grade Level of Program
- Student Characteristics
- Programming

▼ Attendance Characteristics

- Average Number of Students per Day
- Percent of Students Attending over 30 days
- Family Members (other than Student) Served

- Home
- I-General Information
- II-About Students
- III-About Programming
- IV-Evaluation and Outcomes
- Reports
- LogOut

### 21st CCLC Illinois Benchmarking Tool Sample Grant

- Step One: Please select the search criteria from the left menu.
  - Step Two: Then use the above performance indicator tabs to view
- OR
- You can view your individual program data without selecting the search criteria by using the above performance

Click on the link to go into the secure student data portal

Handy audio tutorial shows you exactly how to compile student performance data to report to PPICS

Student Data Portal

[Tutorial](#) 

- To report your student data information, click here: [21st CCLC Student Data Portal](#)

# Student Roster



The landing page will show you all the students entered into the data table (fictitious examples are shown here)

## Community Learning Centers Marking Tool



### Student Data Portal Sample Grant

To view or add the students by center, please select the center from the dropdown menu below.

Select your Center:

[View all Students in Grant](#)

[View Performance Reports](#)

#### List of All Students in your Grant

<a href="#">ISBE SISID</a>	<a href="#">Student Last Name</a>	<a href="#">Student First Name</a>	<a href="#">Time in Program</a>	<a href="#">Center Name</a>	<a href="#">Edit</a>	<a href="#">Delete</a>
888881237	Lname4	Fname4	60-89 days	Sample Center A	<a href="#">Edit</a>	<a href="#">Delete</a>
888881542	Lname42	Fname42	30-59 days	Sample Center A	<a href="#">Edit</a>	<a href="#">Delete</a>
888882302	Lname2	Fname2	29 days or Less	Sample Center A	<a href="#">Edit</a>	<a href="#">Delete</a>
888881280	Lname47	Fname47	30-59 days	Sample Center B	<a href="#">Edit</a>	<a href="#">Delete</a>
888881248	Lname15	Fname15	30-59 days	Sample Center A	<a href="#">Edit</a>	<a href="#">Delete</a>
888881501	Lname1	Fname1	60-89 days	Sample Center A	<a href="#">Edit</a>	<a href="#">Delete</a>
888881234	Lname1	Fname1	30-59 days	Sample Center A	<a href="#">Edit</a>	<a href="#">Delete</a>
888881235	Lname2	Fname2	30-59 days	Sample Center A	<a href="#">Edit</a>	<a href="#">Delete</a>
123445634	-	-	60-89 days	Sample Center A	<a href="#">Edit</a>	<a href="#">Delete</a>
888881236	Lname3	Fname3	60-89 days	Sample Center B	<a href="#">Edit</a>	<a href="#">Delete</a>

You are viewing page 1 of 1 (each page has limit of 15 students)



# Adding a Student to your Roster



To record a student in your roster, first select the center which the student attends

## Community Learning Centers Benchmarking Tool



### Student Data Portal Sample Grant

To view or add the students by center, please select the center from the dropdown menu below.

Select your Center:

### Sample Center A

To monitor performance of students in your center on the state assessments, add the student's SISID# [what's this?] and select the student's time in program in the boxes below. When entered, the screen will automatically display the student's performance levels on state assessments, if available.

Next input the student's state SISID# here ... record their time in the program here ... and click on "Add Student"

ISBE SISID	Time in Program	Click Add Student
<input type="text" value="123454321"/>	<input type="text" value="90 days or More"/>	<input type="button" value="Add Student"/>

### List of Students in your center: Sample Center A

Click on headers to sort by each column. "-" indicates no data available for that student

Student Information			Performance Levels in School Year 2009-2010		Make Changes		
ISBE SISID	Last Name	First Name	Math	Reading	Time in Program	Edit	Delete
888881237	Lname4	Fname4	Exceeds	Meets	60-89 days	<a href="#">Edit</a>	<a href="#">Delete</a>
888881542	Lname42	Fname42	Exceeds	Exceeds	30-59 days	<a href="#">Edit</a>	<a href="#">Delete</a>

# Adding a Student To Your Roster



## Student Data Portal Sample Grant

To view or add the students by center, please select the center from the dropdown menu below.

Select your Center:

Performance Reports

**Now the student is recorded in the roster.**

**In the actual screen on the benchmarking site the student's name will automatically appear, with a few exceptions for those students who had not taken any assessments.**

To monitor performance of students in your center, enter the student's ISBE SISID and select the student's time in program in the boxes below. When entered, the screen will automatically display the student's performance data.

and select the student's time in program in the boxes below. When entered, the screen will automatically display the student's performance data.

ISBE SISID

### List of Students in your center: Sample Center A

Click on headers to sort by each column. "-" indicates no data available for that student.

Student Information			Performance Levels in School Year 2009-2010			Make Changes	
<u>ISBE SISID</u>	<u>Last Name</u>	<u>First Name</u>	<u>Math</u>	<u>Reading</u>	<u>Time in Program</u>	<u>Edit</u>	<u>Delete</u>
123454321	-	-	-	-	90 days or More	<a href="#">Edit</a>	<a href="#">Delete</a>
888881237	Lname4	Fname4	Exceeds	Meets	60-89 days	<a href="#">Edit</a>	<a href="#">Delete</a>
888881542	Lname42	Fname42	Exceeds	Exceeds	30-59 days	<a href="#">Edit</a>	<a href="#">Delete</a>
888882302	Lname2	Fname2	Exceeds	Exceeds	29 days or Less	<a href="#">Edit</a>	<a href="#">Delete</a>

# Your Student Performance Report



To view student performance, click on the Performance Report button and select which center you wish to see ... The results will populate automatically

## Community Learning Centers marking Tool

### Student Data Portal Sample Grant

To view or add the st

dropdown menu below.

Select your Center: Choose one...

view all Students in Grant

View Performance Reports

Grant Report - Sample Grant

Centers Report - Click on headers below to view the performance report of each center.

Sample Center A

Your performance report is ready to report to PPICS

Number of regular attendees for whom assessment results are available for state proficiency test administered during the school Year: 2009 - 2010

Print To PDF

Both Reading and Mathematics	Mathematics only	Reading only	Neither
5	0	0	1

Number of regular attendees who scored in the following levels on the state proficiency test administered during the school Year: 2009 - 2010

Performance Levels	Math	Reading/Language Arts
Exceeds Standards	2	1
Meets Standards	3	4
Academic Warning/Below Standards	0	0
Totals	5	5

## Adding Support for the 21<sup>st</sup> CCLC Program

- The Promising Practices benchmarking web tool supports the 21<sup>st</sup> Century CLC program.
  - It provides a convenient way to drill down and compare grants on any number of criteria, quickly and easily.
  - It provides a web services feature that enables grants and centers to obtain the performance reports for PPICs and other uses.
  - We hope you have found this presentation useful. Don't hesitate to contact us at the address on the next page at any time should you have any questions.

# Thank You!

## Contacts

For ISBE 21<sup>st</sup> CCLC Program:

Sarah Ogeto [sogeto@isbe.net](mailto:sogeto@isbe.net)

For passwords or technical assistance with web tool:

Valerie Lorusso - NIU - 815-753-0978 or [vlorusso@niu.edu](mailto:vlorusso@niu.edu)

For help with the student data reporting feature:

Mike Gillespie -NIU

815-753-5394 or [mgillespie1@niu.edu](mailto:mgillespie1@niu.edu)

Harvey Smith - NIU

815-753-9680 or [hsmith@niu.edu](mailto:hsmith@niu.edu)